

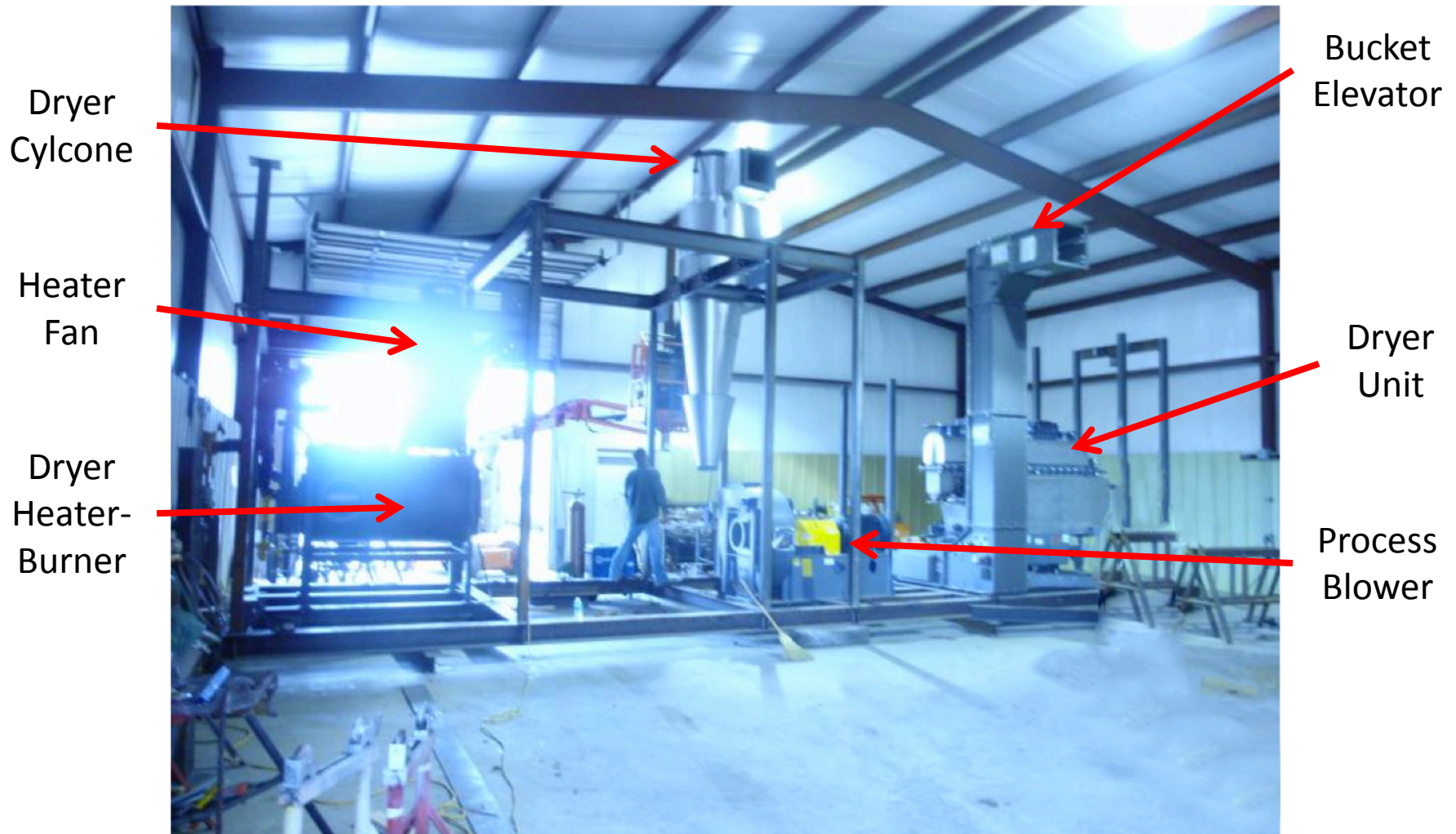
Clean Coal Technologies Pilot Plant

Construction in Progress

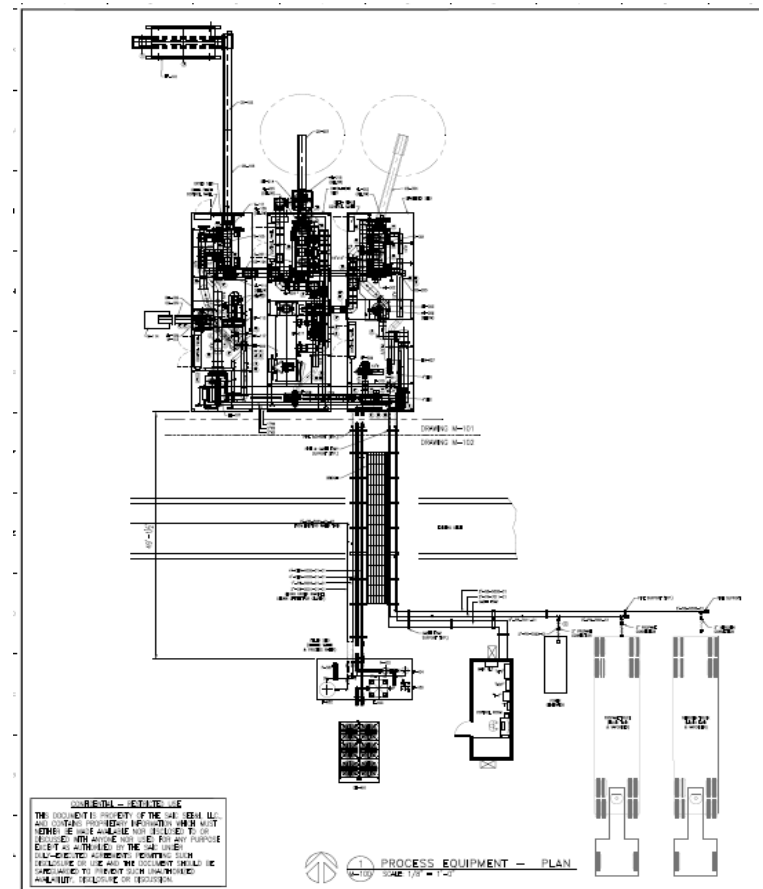


LeFlore County, Oklahoma

Dryer Skid Assembly



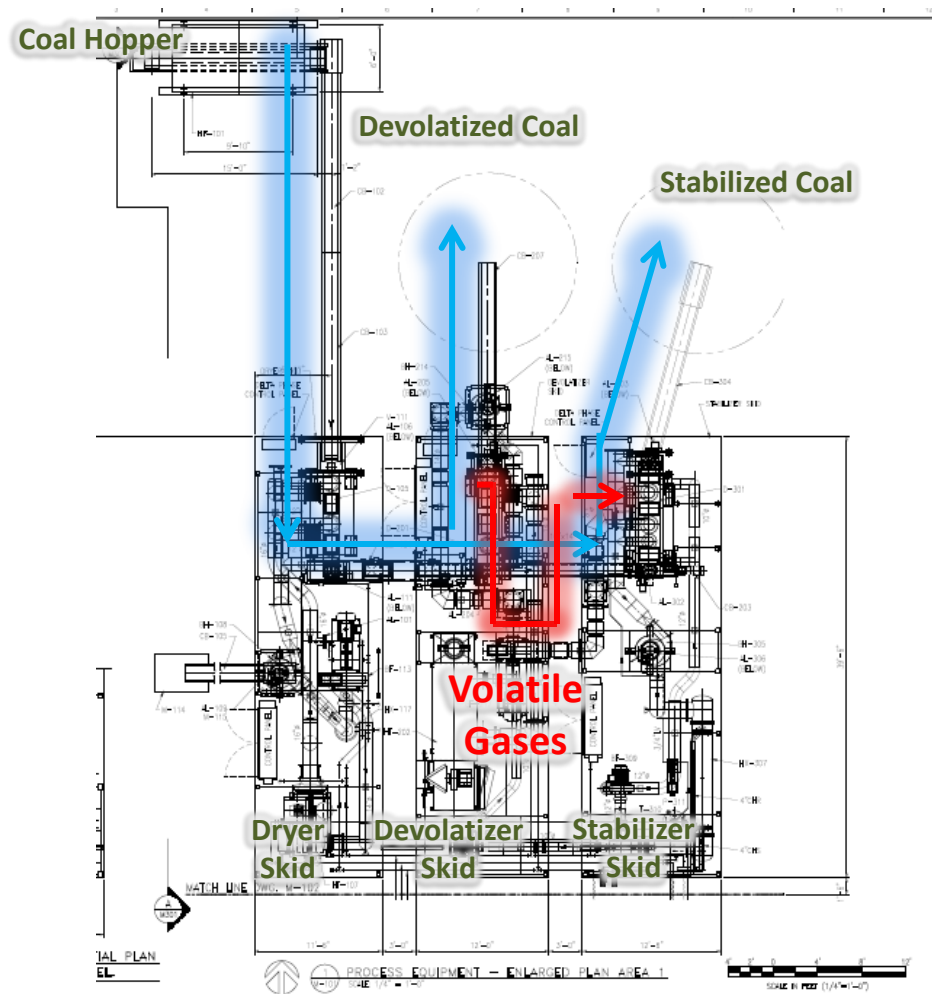
Test Plant Site Plan- AES Shady Point



The diagram illustrates a coal gasification process with the following components and flow:

- Raw Coal** enters the system from the top left.
- Dryer**: The first stage where raw coal is processed. It includes a vertical vessel (D-105 DRYER) and a horizontal vessel (AL-111).
- Devolatilizer**: The second stage, featuring a vertical vessel (D-201 DEVOLATIZER) and a horizontal vessel (AL-204).
- Stabilizer**: The third stage, consisting of a vertical vessel (D-301 STABILIZER) and a horizontal vessel (AL-302).
- Outputs**:
 - Devolatilized Coal**: The solid product from the devolatilizer stage.
 - Stabilized Coal**: The solid product from the stabilizer stage.
 - Volatile Vapor**: Gaseous products that flow from the devolatilizer to the stabilizer.
- Dimensions and Equipment Labels**:
 - Overall dimensions: 11'-0" height, 13'-3" width.
 - Equipment labels include: PRG-1001, PRG-1002, PRG-2002, PRG-2003, PRG-2004, PRG-3001, PRG-3006, AL-104, AL-111, AL-204, AL-302, D-105, D-201, D-301, PSV-104, CB-203, SP-201, SP-202, SP-203, and BOS.
 - Flow paths are indicated by blue arrows for solids and orange arrows for vapors.

Test Plant Layout



Devolatizer/Stabilizer Skid Bases



Cyclones



Hi-Temp Ductwork



Blowers for Devolatizer Skid



Dryer Skid Fabrication



Burner



*Fan & Bucket
Elevator*



Cyclone

Fabricated Transition Pieces



Pilot Plant Under Construction

