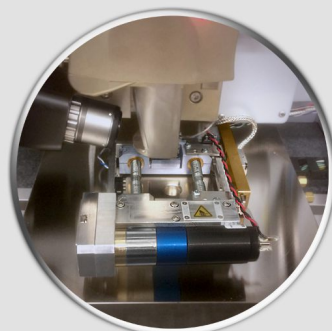
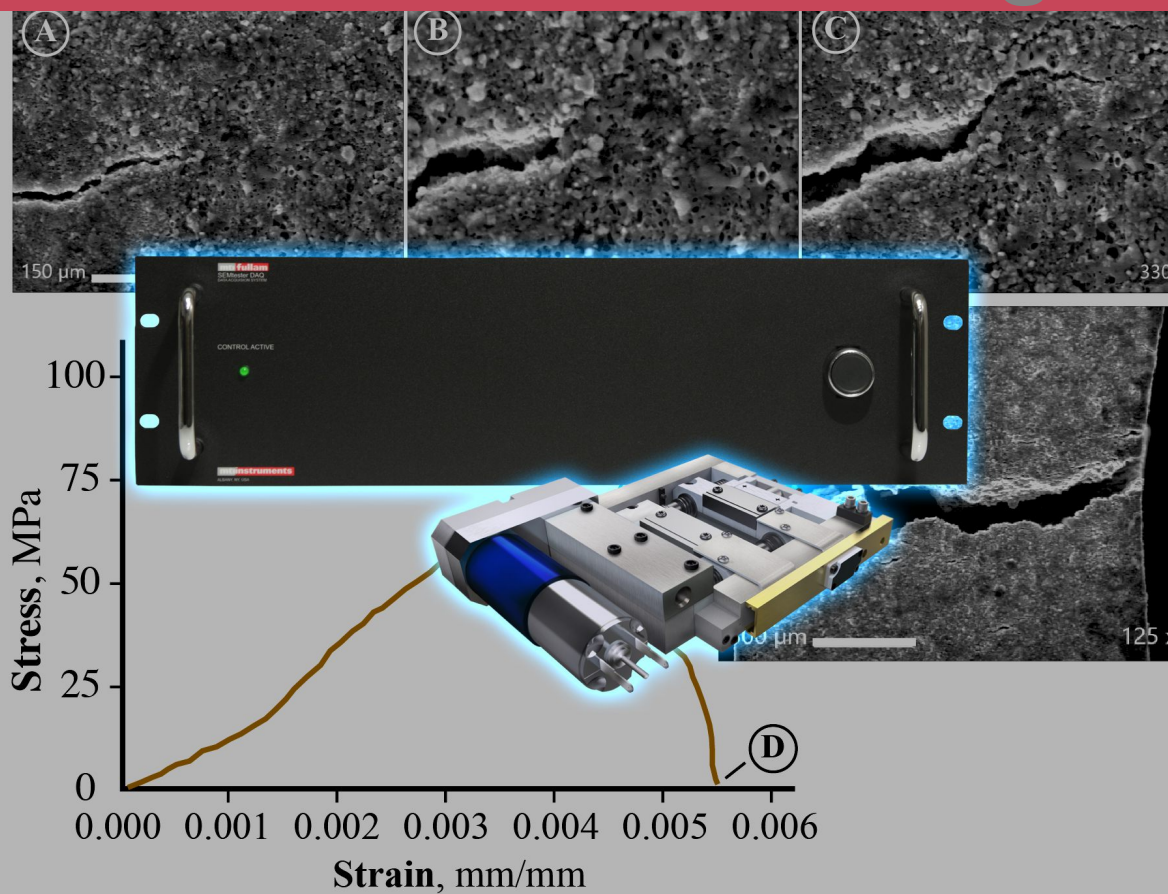
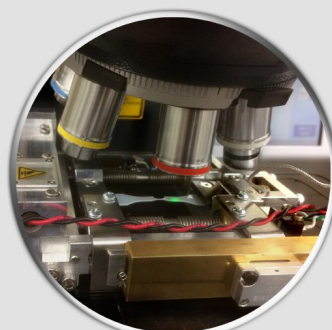


# MTI Tensile MicroStage



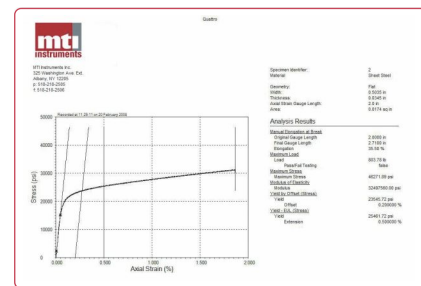
AFM



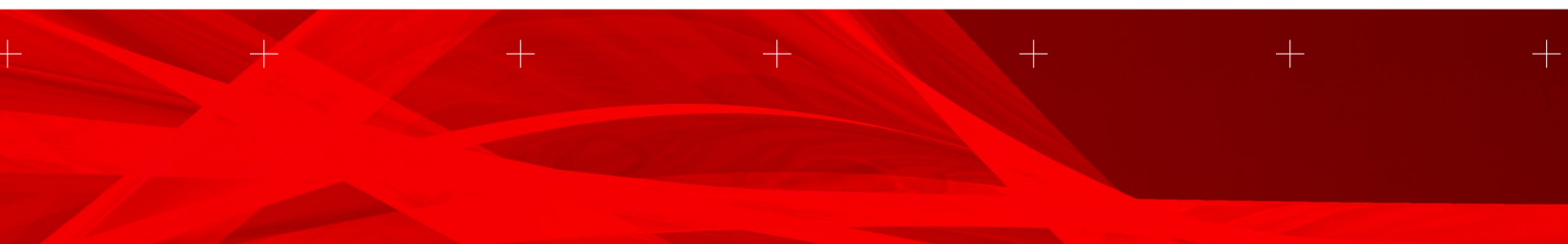
LM

## FEATURES:

- Designed with a reduced height for the tight spaces under adjustable-lens microscopes
- Light-weight materials and configuration to meet air table and motorized stage requirements.
- System can accommodate specimen risers for short-range lens and detectors.
- Load Cell can be easily changed for more accurate measurements at lower forces.



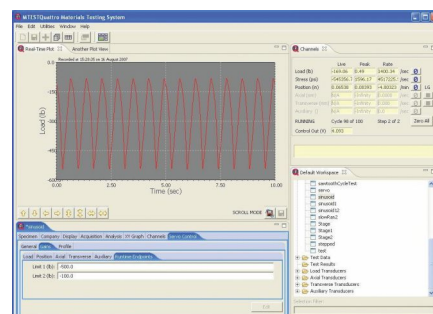
Easily exportable, customized analysis reports of test results



## Intuitive Operating Package

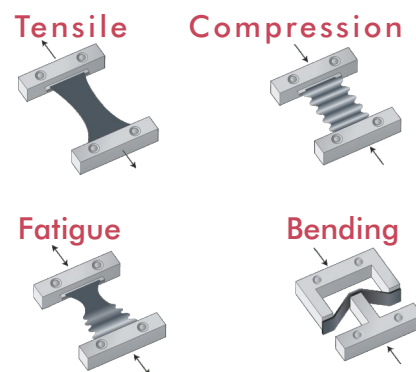
To control experiments and collect data, MTI Tensile MicroStage Tester uses a proprietary Windows®-based control and material testing software system that complies with ASTM specifications. This powerful package provides a user-friendly interface to set system test parameters and analyze data. Specimen dimensions are defined along with strain rates and thresholds (load, elongation, time), which are then used to perform automated tests and calculations.

These parameters are stored as files that can be called upon again for future tests. Results are provided in real time and stress-strain curves generated while testing is in progress. Key parameters such as peak load/stress, yield points, modulus of elasticity and other measurements are reported. Raw test data and results can be exported in standard formats, making it easy to integrate with other data analysis and laboratory management systems.



Real-time plots of test parameters

Product #	Product Description
8000-0075	MTI Tensile MicroStage
8000-0014-007	Data Acquisition System with Servo Control (120 V, 50/60 Hz)
8000-0014-008	Data Acquisition System with Servo Control (240 V, 50/60 Hz)
8000-0073	Specimen Riser Set for MTI Tensile MicroStage
8000-0020-100	100 lbs. Load Cell Assembly for MTI Tensile MicroStage
8000-0066	Extension Cable for Motor Power - 50cm (20")
8000-0067	Extension Cable for Load Cell - 50cm (20")
8000-0068	Extension Cable for Glass Scale - 50cm (20")

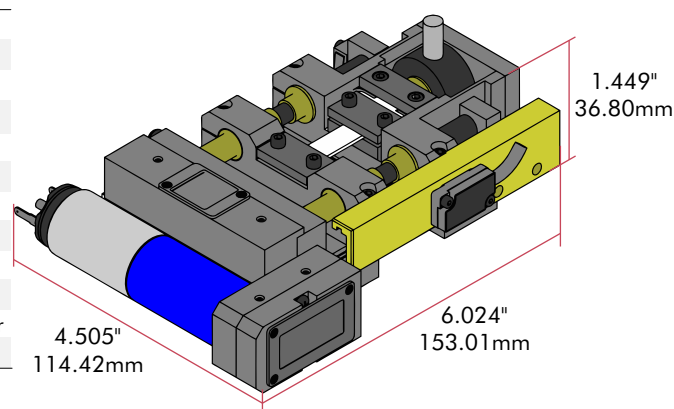


## Specifications

Max Load Capability	100 lbs. (450 N)
Weight	1.65 lbs.(750g)
Max. Sample Size <sup>1</sup> (Thick x L x W)	1mm x 71.5mm x 10mm
Min. Sample Size <sup>2</sup> ( L x W)	44.5mm x 10 mm
Max Strain Travel	27mm
Load Cell Accuracy	±0.2% of full scale load range
Linear Scale Accuracy	±20 nm resolution
Power Requirements	100-240 Vac, 50-60 Hz
Storage Environment	-18°C to 65°C non-condensing
Data Acquisition Rate	Adjustable to 1 kHz max
Computing Requirements	Windows XP, Vista or 7, 2 Gb DRAM or greater
Export Capabilities	.csv, .pdf, .jpg, .bmp

<sup>1</sup>Compression Only

<sup>2</sup>Tension Only



If you require Tensile Stages for SEM and/or require stages with sample heater, please check our other tensile stage lineup at <http://www.mtiinstruments.com/products/semtester>

**MTI Instruments, Inc.**

325 Washington Avenue Extension  
Albany, NY 12205-5505

PH: +1-518-218-2550

OR USA TOLL FREE: 1-800-342-2203

FAX: +1- 518-218-2506

EMAIL: [sales@mtiinstruments.com](mailto:sales@mtiinstruments.com)

[www.mtiinstruments.com](http://www.mtiinstruments.com)

**mtiinstruments**

A subsidiary of Mechanical Technology, Inc.(MKTY)