



**Next Graphite Inc.**  
OTC Markets: GPNE

**Next Graphite Incorporated**

318 North Carson Street  
Suite 208  
Carson City, NV 89701 USA  
Tel: +1 (949) 397-2522  
[www.nextgraphite.com](http://www.nextgraphite.com)

**Executive: US-Based**

Cliff Bream, CEO  
Tel: +1 (949) 397-2522 ext. 1  
cbream@nextgraphite.com

**Geologist: Namibia– Based**


Gilbert Jemwa  
Tel: (+264) 812959989  
Jemwagil@yahoo.com

**Investor and Media Relations -US**

Paul DeRiso  
Tel: +1 (925) 365-6088  
ir@nextgraphite.com

**FINANCIAL HIGHLIGHTS**

**OTC Markets : GPNE**

<b>Mine</b>		Republic of Namibia
<b>Headquarters</b>		Namibia
<b>Fiscal Year</b>		December 31
<b>Market Cap</b> (10/3/16)		USD ~\$3 M
<b>Current Price</b> (10/3/16)		USD ~\$0.05
<b>FD Shares Outstanding</b>		50.4 M
<b>Highest Reported Annual</b>		2,627 Tons

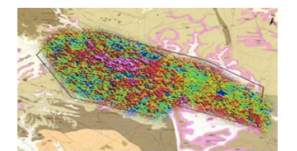
**Next Graphite, Inc. (OTCQB: GPNE)** is a development stage company targeting the growing global graphite production industry with the Company’s 96,000-acre Africa-based Aukam Graphite Mine. The Aukam Graphite Project was established in 1940 in the current Republic of Namibia, produced USD\$30 million of graphite at today’s prices through 1974, and is estimated to still hold four (4) million tonnes of natural, high-grade, vein type, hydrothermal-sourced graphite reserves. Global graphite demand is being driven by the development of new markets for clean and efficient energy alternatives, smart grid infrastructure and military capabilities. Next Graphite has an immediately available, surface-visible, stockpile, along with competitive projected mining and processing costs. The completion of GPNE's Aukam Graphite mine re-launch and development activities include increased underground mining and construction of a new plant.

**INVESTMENT HIGHLIGHTS**

- **Next Graphite’s Aukum mine** is poised to re-launch production of high-quality, unique lump/vein graphite
- **25,000 tons of graphite already produced** during 30+ years of operations before the mine was closed due to unforeseen disruptions in the 1970’s.
- **Estimated 4 million tonnes** of high-grade graphite from hydrothermal-sourced graphite reserves (outside geologist report of Feb 2015).
- **Operational adits and stopes** in various locations on the licensed property provide ready access to graphite.
- **Graphite demand growing** with new batteries for electric vehicles, consumer electronics, smart grid and military applications also increasing.
- **LOI in March 2016 initial annual order of 5,000 tonnes.**
- **GPNE’s detailed plan to re-launch mining operations** is led by global graphite specialists and requires less than <USD \$2.0 million of capital expenditure.



Major graphite stockpiles after trenching



Mineralization areas for Exclusive Prospecting License, #3895



**NEXT GRAPHITE’S AUKUM PROJECT**

- **High grade crystalline lump/vein graphite project**
- **Only jurisdiction** of lump graphite ores outside of Sri-Lanka
- **Former producer that mined high quality vein-type graphite** from adits and an open cut
- **Selective mining of high grade** ore resulted in graphitic material left in five surface dumps
- **84 samples from** three of the five dumps averaged 42% Cg (carbon as graphite)

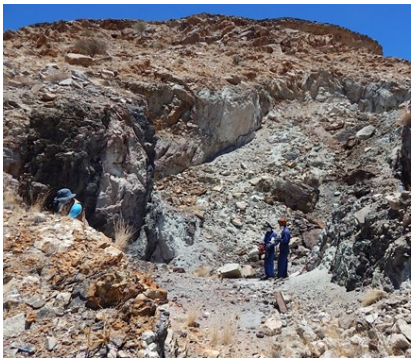
**AUKAM GRAPHITE USES**

- Lump/vein graphite is a **preferred source of graphite** for many end users
- It has characteristics suitable for use in over **20 value added applications**
- **The most common market** is electric foils which makes up over 63% of the market
- **It is also suitable for conventional graphite markets that** include crucibles, break pads, electrodes, refractories, lubricants, batteries, pencils and nuclear reactors



\* Namibian Ministry of Mines; Element 12 Consultants’ Report

## AFRICAN MINING OVERVIEW - FOCUS NAMIBIA



Existing, Open Air Pit at Aukam Mine with Production from 1940-1974

- Namibia is a country of ~2.5 million people with one of the highest per capita GDPs in Sub-Saharan Africa.
- Although an independent nation since 1990, it has close ties to South Africa and Europe.
- Mining's contribution to Namibia's gross domestic product - 10.4% in 2009, 8.5% in 2010, 9.5% in 2011 and 11.5% in 2012 - makes it one of the largest economic sectors of the country.
- Namibian government and ministries encourage private sector mining development and cooperation with international partners and foreign direct investment.
- Little rainfall and dry lands provide a year-round, mining-friendly climate.
- Increasing rail and road systems designed to support mining transport to export ports in Angola, Botswana and Zambia.



NG's Aukam Mine Location in Namibia

## PRODUCTION AREA



Active Stope (tunnel) Provides Access to Veins

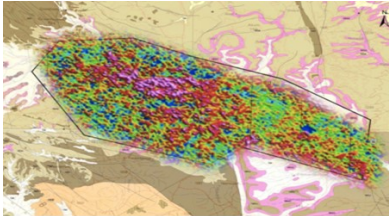
- The only historical graphite producer in Namibia
- Located on Aukam Farm 104, Bethanien District, 35 miles SW of Goageb, near the South African border, 120 miles of active port in Luderitz
- High Quality lump/view graphite
- Connected by rail and road to Angola and South Africa
- Electricity and water already on site from adjacent farm

## HISTORY and PRODUCTION

- 2013**
  - Purchases Aukam license and begins re-opening of the mine
- 2014**
  - Land lease secured
  - Bulk screening of surface-available tailing heaps
  - 3rd - party lab analyses report high concentrations of high-grade graphite
- 2015**
  - 3rd geologist report states "an estimated 4 million tonnes of reserve of high-grade graphite from hydrothermal source"
  - 3rd party lab flotation testing results yield impressive 97.1%.
  - Joint venture entered into with partner to fund and build new graphite processing plant
- 2016**
  - Our exploratory mining license EPL 3895 renewed and approved
  - LOI to purchase an initial 5,000 tonnes of unprocessed graphite from Aukam tailing heaps
  - Stockpiles built Underground testing and bulk sampling
- 2017**
  - Continuation of underground mining
  - Plant construction and production of processed graphite scheduled to occur



Clearly Visible Surface Graphite



Mineralization areas for Exclusive Prospecting License, #3895



NG's Large Flake Surface Graphite Sample

## GROWTH STRATEGIES AND PRODUCTION PLAN

Next Graphite has a plan to re-launch mining production and on-site processing for a go-forward additional cost of approximately \$1.5 million. The completed mine is targeting 5,000 tonnes of annual production. Pre-plant sales will be generated, starting in 2016, from our surface visible graphite tailings stockpile.

Objectives	Target by Year and Quarter							
	2015				2016			
	1	2	3	4	1	2	3	4
1. Favorable Preliminary Economic Analysis	■							
2. Start of Joint Venture with Micron/ CKR Carbon		■						
3. Concludes 1 <sup>st</sup> Underground Bulk Sampling Program			■					
4. Up to 96% Lump, Vein Graphite Reported				■				
5. LOI for First 5,000 Tonne Order					■			
6. Build Stockpiles of Above-Ground graphite							■	
7. Prepare for Start of Plant Construction								■

## MANAGEMENT TEAM

**Cliff Bream, President and CEO**—Mr. Bream is a seasoned executive, turnaround expert, and investor with over 30 years experience leading companies in the telecommunications, computer, office products, and packaged goods sectors. He has managed public and private companies as President/CEO, has served as a senior executive at Fortune 500 corporations, and has worked in environments ranging in revenue from \$1 million to over \$15 billion. Mr. Bream was appointed President and CEO of Next Graphite, Inc. in October 2013. Prior to this he served as Senior Managing Director at a national specialty financial advisory services firm, and as Senior Managing Director at a turnaround and restructuring firm. Mr. Bream holds a B.S. from the United States Naval Academy and earned an MBA from the Wharton School of Business, University of Pennsylvania

**Michael Doron, Chairman**—Mr. Doron is an experienced entrepreneur, international business leader, and independent board member. As a strategic planner, based in Stockholm, Sweden, Mr. Doron has used his background as CFO, COO, EVP, consultant, and lobbyist to devise the most effective tactics in achieving financial goals while mitigating risk, increasing revenues, and driving productivity. In the public company arena, Mr. Doron currently serves as Chairman and Secretary at Ukraine-based, GASE Energy, Inc. (OTC QB: GASE). Mr. Doron is on the Board of Directors at MusclePharm Corp. (OTC QB: MSLP) where he is Chairman of its Governance and Nomination Committees, and a member of the Audit Committee.

**Gilbert Jemwa- Geologist + Namibia Country Manager**—Mr. Jemwa previously worked for Rio Tinto, Ngezi Mining, Ministry of Mines and Energy (Namibia) and TeckCominco. He the founder and Principal Geologist of Native GeoSciences, a Namibian company specialising in geological services including geological survey and project management. Mr. Jemwa holds a Master's Degree in Exploration Geology from the University of Zimbabwe and a Post Graduate Diploma in Mineral Exploration and Resources Evaluation from the International Institute for Aerospace Survey and Geoinformation (ITC), the Netherlands