



World Surveillance Group Newsletter (Edition 2: March 13, 2012)

Launch of GTC E-Commerce Mobile Satellite Solutions Website

It has been a busy time for GTC over the past few months due to the launch of our new e-commerce mobile satellite solutions website which went live on February 14th. Work started on the website during the Summer of 2011 and completing it involved more than 500 hours of work. The website contains nearly 200 pages of information on GTC's specialized tracking capabilities and products as well as general satellite communications equipment from leading network providers, and includes product support pages. Additionally, registered users of GTC's tracking devices and other customized messaging services can access their accounts through the new website and view the movements and other diagnostic information taken from their tracking devices in near real-time through our proprietary mapping application.



GTC's new web portal home page

In addition to generating revenue from satellite tracking related construction and engineering projects, GTC has in the past secured and serviced U.S. Department of Defense and defense-related prime contractor contracts for mobile satellite communications hardware and airtime worth in excess of \$10 million. GTC's new website has been launched in order to capitalize on this government-related satellite communications experience and maximize revenue from the sale of mobile satellite solutions to global government, commercial and individual users, a rapidly growing market currently estimated to have a \$10 billion value.

GTC's new website offers a range of portable satellite voice, data and tracking solutions that provide communications services to areas of the world where other methods of communication do not exist or are currently limited, including remote land and ocean areas, the polar regions, and areas where an existing telecommunications infrastructure has been negatively affected by political conflicts, natural disasters or other such events.

Some of the available solutions offered on GTC's website include handheld satellite phones, personal and asset tracking devices and portable high speed broadband terminals, all of which work virtually anywhere in the world.



Some of the mobile satellite communications devices offered by GTC



GTC's solutions are ideally suited for industries such as maritime, aviation, government/military, emergency/humanitarian services, mining, forestry, oil and gas, heavy equipment, transportation and utilities as well as recreational users.

Over the coming months, GTC intends to significantly increase the range of communication and tracking products and solutions available for customers to purchase online through its retail website. The additional products are likely to include handheld land radios, handheld personal GPS locators, walkie talkie radios and an increased range of satellite and GSM-based tracking devices. GTC will also be looking to establish reseller agreements with alternative satellite networks and hardware providers to complement existing relationships with major networks such as Globalstar, Iridium, Inmarsat and Thuraya.

During 2012, GTC plans to recruit a global sales team to aggressively market our range of customized tracking devices, satellite communications equipment and other offerings. GTC also expects shortly to be introducing its products and solutions through additional sales channels such as Amazon, eBay and other online retail sites, as well as pursuing sales through the U.S. General Services Administration ("GSA") Schedule Program. The GSA Schedule Program enables billions of dollars in federal spending and helps eligible users, including all branches of Federal, State and Local governments, more easily meet their procurement needs.

Since the launch of GTC's website one month ago, GTC has received a steady flow of inquiries from U.S. government entities as well as commercial and individual users interested in our range of products and solutions. GTC is actively responding to various Requests for Information resulting from these inquiries.

GTC's Custom Developed Tracking Devices

GTC's new website debuts a line of its own custom developed commercial tracking products that were previously used exclusively by U.S. government customers and thus have satisfied the toughest operating requirements for years. GTC's tracking devices will operate and be certified for use on the Globalstar satellite constellation. Users of these GTC tracking products will be able to access their accounts online and view near-live location and status transmissions using GTC's proprietary mapping web interface.

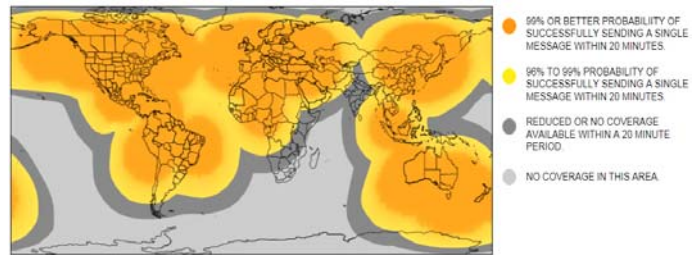


GTC's custom developed tracking devices

GTC's custom developed tracking devices operate using the Globalstar Low Earth Orbit (LEO) satellite constellation, which produces minimal transmission delays compared to Geostationary (GEO) systems, due to the shorter distance signals have to travel in a LEO constellation.



LEO satellite systems also typically have smaller antenna requirements, are less prone to signal blockage caused by terrain and generally have lower battery consumption than GEO satellite networks. As a result of these advantages of using the LEO network, GTC believes its devices will be in demand from users across the globe requiring reliable, easy-to-use tracking and messaging services.



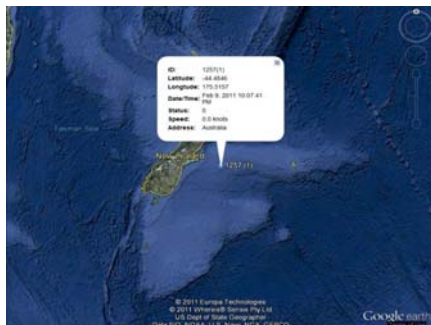
Coverage map for GTC's tracking devices

GTC's Satellite Enabled Tracking Services

GTC offers a complete tracking and messaging solution that enables users to locate and track or monitor almost anything, anywhere in the world. We offer product design, satellite tracking- or monitoring-related engineering services, highly competitive messaging plans and a mapping application to enable our customers to view online the location, status and other diagnostic information of their devices.

GTC operates its own satellite ground station in Maryland which is used both extensively for product testing and R&D and to demonstrate our specialized satellite enabled tracking and monitoring capabilities to existing and potential customers. Our ground station can receive and process transmissions from tracking devices operating within a radius of up to 2,000 miles or more from its base. Additionally, our back office data center processes thousands of messages that we receive every day from tracking devices used by our customers all over the world.

GTC's data center immediately processes incoming transmissions from a tracking device and decodes the information before storing it in our data warehouse. Once processed, our customers are notified of their incoming messages by various methods including email, SMS, or FTP. Additionally, we provide our customers with a free Google Earth-based mapping application with secure login to enable them to see both current and historic data transmitted by their devices in the field.



A GTC tracker in use off the coast of New Zealand

Applications our customers may require include a method of tracking and monitoring various diagnostics on a fleet of vehicles, ships or other vessels, monitoring the status of equipment used in remote locations, or enabling remote workers to transmit their movements and call for help if needed. Whatever the requirement, GTC believes it can offer an end-to-end tracking and messaging solution.